



Powering and Connecting Your World

NEW PRODUCT ANNOUNCEMENT

Cooling Solutions

Protect Critical Infrastructure with Rack-Mount Cooling



The plug-and-play SRXCOOL7KRM requires only 8U of rack space.

Perfect for:

Single rack enclosures in server rooms, MDFs and small data centers.

IT managers need to protect critical network infrastructure against overheating. For a single rack installation, however, an HVAC solution may be burdensome, costly and ineffective.

Tripp Lite's 50 Hz SRXCOOL7KRM SmartRack® Rack-Mounted Air Conditioning Unit mounts in any EIA-standard 19-inch enclosure. Without requiring any additional floor space, it provides precision close-coupled cooling and intuitive network management tools for a solution that is simple and effective.

Key Benefits

EFFICIENT COOLING

- 8U rack-mount chassis fits in any EIA-compliant enclosure to create less clutter and save valuable floor space in IT environments
- Directional output vent aims air directly at rack equipment for precision cooling
- 7,000 BTU/h (2.0 kW) close-coupled cooling effectively protects equipment against overheating while requiring less energy than computer room cooling systems

NETWORK MANAGEMENT

- Remote management accessory (sold separately) provides a platform for monitoring temperatures, receiving alerts, reviewing logs and controlling settings over Ethernet from anywhere

INTUITIVE CONTROL

- Dual-digit LCD screen displays current temperature in real time
- Push buttons and diagnostic LEDs communicate vital operating conditions at a glance
- Built-in timer lets managers schedule unattended shutdowns and startups

CONVENIENT OPERATION

- Automatic restart feature promptly resumes equipment cooling after a power failure
- Quiet operation will not add disruptive noise to an office/education setting
- Built-in evaporator eliminates condensation with no floor drain or water collection tank needed

Feature Focus

1 Control Panel



The SRXCOOL7KRM has a push-button control panel with an easy-to-read digital temperature display and diagnostic LEDs for convenient local management.

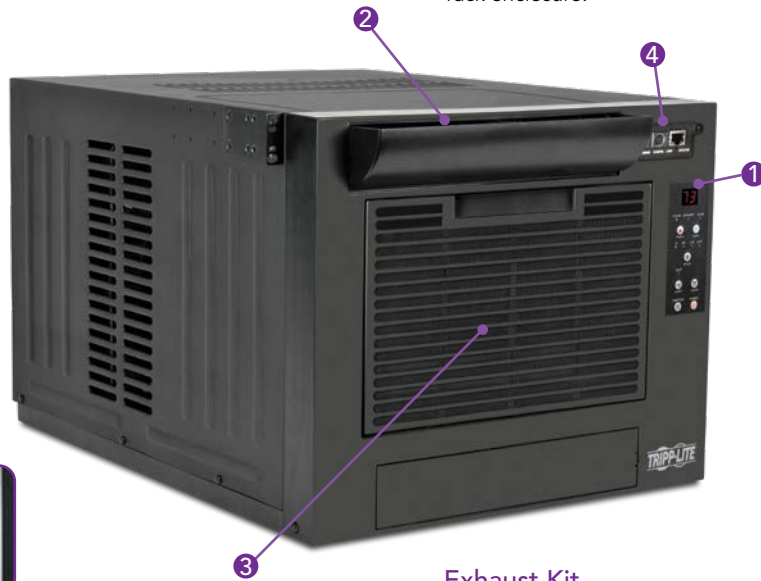
2 Output Vent

The SRXCOOL7KRM's directional output vent can direct air upward or downward, which allows it to operate from the bottom or top of the rack enclosure.



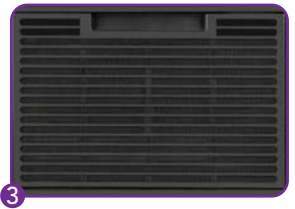
Air Dam Kit

The included air dam kit seals off part of the rack enclosure door to optimize airflow.



3 Air Filter

The SRXCOOL7KRM's air intake filters contaminants for added equipment protection.



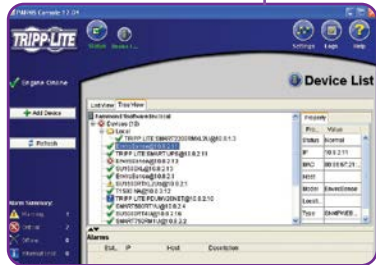
Exhaust Kit

The optional SRXCOOL7KDUCT exhaust kit (sold separately) removes hot air from the room through a dropped ceiling, window or return duct.



4 Remote Management

The optional SRXCOOLNET2LX network management card (sold separately) allows IT staff to monitor temperatures, receive alerts, access logs, change settings and automate operation over the network using built-in PowerAlert® software.



Looking for Additional Cooling Mounted Outside the Rack?

The SRXCOOL12K portable air conditioning unit provides 12,000 BTU/h (3.5 kW) of cooling capacity in a compact 30 x 50.5 cm (12 x 20 in.) footprint. It has features similar to the SRXCOOL7KRM, with higher capacity and additional placement options.



SPECIFICATIONS

Model:	SRXCOOL7KRM
Cooling Capacity:	7,000 BTU/h (2.0 kW)
Refrigerant Type:	R410A (Complies with environmental standards worldwide.)
Nominal AC Input:	230 V / 50 Hz
Input Cord Length*:	1.8 m (6 ft.)

Form Factor:	8U Rack Cabinet
Dimensions:	353 x 441 x 572 mm (13.9 x 17.35 x 22.5 in.)
Weight:	27.9 kg (61.6 lb.)
Standards:	Tested to IEC60335-1:2010 (5th Ed), IEC60335-2-40:2018 (6th Ed), RoHS



*Power cord is not terminated with a plug. Customers are responsible for providing and installing the appropriate plug that complies with local wiring and safety regulations.

Network Management Accessory

SRXCOOLNET2LX Network management accessory card adds Ethernet connection for remote management via SNMP, Web, SSH or telnet.

Exhaust Kit Accessory

SRXCOOL7KDUCT Directs and disperses heat through your facility's ventilation system or a window. Includes manifold assembly, exhaust tubes, adapters, insert and installation hardware.

For more information, contact:

Brad Andrews

+1300 846 021 | bradandrews@uptimes.com.au

